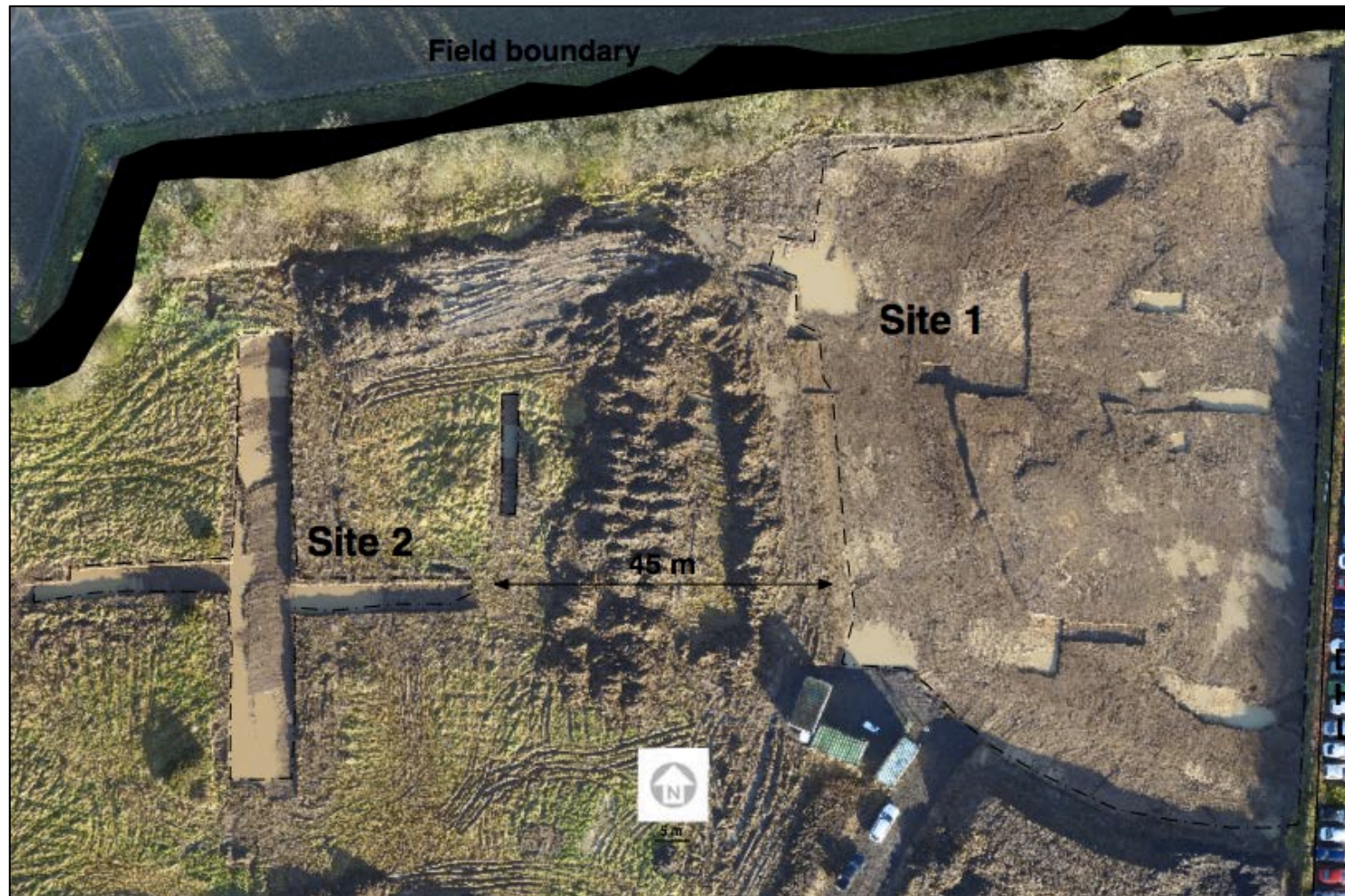




**Figure 1: Orthophotograph from drone survey showing the archaeological trenches excavated in the area of DU014-006002 in Newtown, Dublin Area Logistics Park from S.**





**Figure 2 Orthophotograph from drone survey showing the location of site 1 (ringfort DU014-006001) & site 2 (possible ringfort DU014-006002) archaeological trenches in Newtown, Dublin Airport Logistics Park**