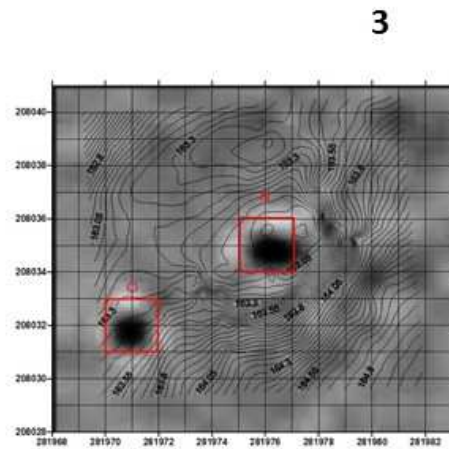
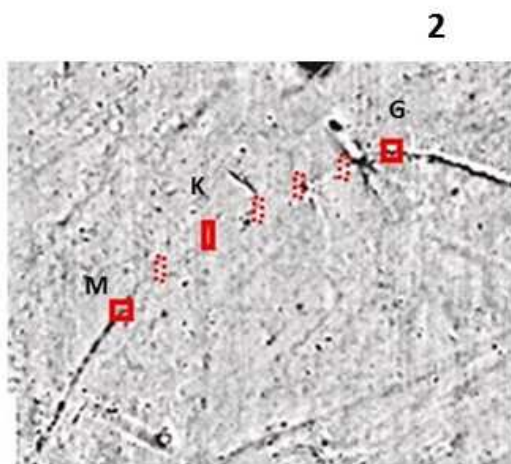
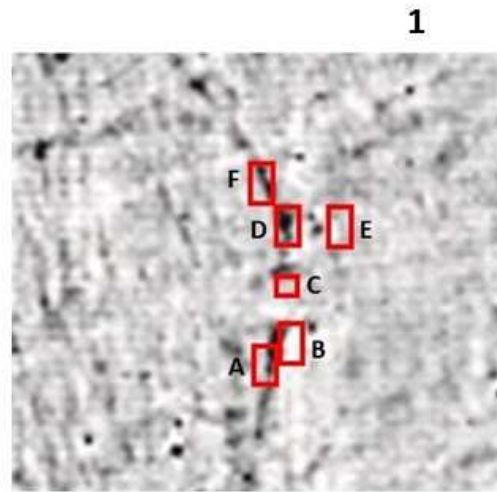
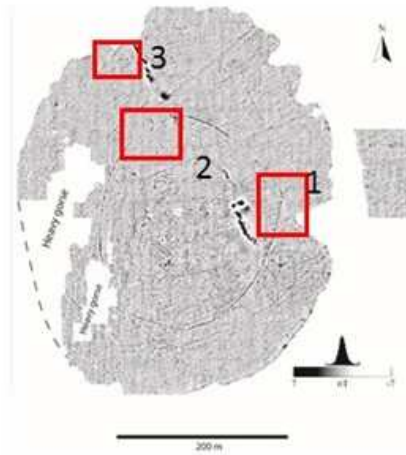


Left: map showing the location of Dún Ailinne; right: magnetometer image of the interior of the site showing the summit enclosure (in red; the lighter feature is the Rose phase timber structure) and St. John's Well (the small circle in the northwest of the site)



Locations of the units tested. The three areas tested are shown marked in red in the magnetometer image (the three squares are for reference and are not to scale) and then each is enlarged to show the location of specific text units: 1) the entrance area (units A-F); 2) the gap (units G-M—those not excavated are shown with dotted outlines); and 3) St. John's Well (unit N, which was excavated, and unit O, which was not).